

# Making her mark with **POLLED** Genetics!

Our nomination to the Great Cow Contest:

## Hillview Headline Keylime-P, VG-85%

1-10 305 22,160 3.9% 872 3.0% 656 96DCR

2-10 305 20,280 4.1% 835 3.3% 668 98DCR

**#4 Polled GJPI Cow in the breed at +168**

**+1,833M +\$510FM +6.0PL** CDCB GPTA 1/15 75%R

The next dam is a VG-86% "Abe" with over 26,000M actual

A choice out of "Keylime-P" was the third high selling female lot at the 2014 All American Sale.

Leading daughters in our heifer pens:

## Hillview Machete Key-Charm-P-ET, P9

#8 Polled GJPI Female in the breed at +181

**+1,813M +\$500FM +5.0PL** CDCB GPTA 1/15 67%R JH1F

## Hillview Dominic Keylight-P-ET, P9

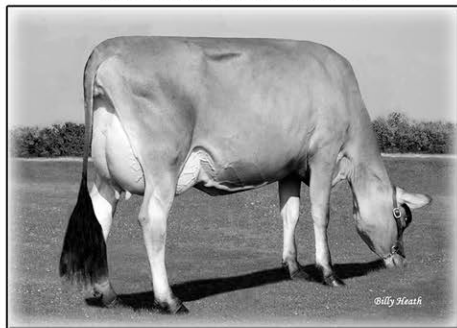
#49 Polled GJPI Female in the breed at +149

CDCB GPTA 1/15 67%R JH1F

She has  
pregnancies due  
to NIKON-P and  
she is pregnant  
to CHILI.



HER MILKING DAUGHTER



## Hillview Louie Katiki-P, VG-84%

Projected to 20,978M, 958F, 644P actual at 1-10

Ranks on the Top 1.5% GJPI Cow List at +141

Purchased by Dutch Hollow Farm, NY,  
at the 2013 National Heifer Sale

Chris and Steve Sorenson and Families

W3995 Cty. Rd. H, Pine River, WI 54965 920/987-5495 home

920/229-6030 cell csorenson000@centurytel.net

**S**ORENSONS HILLVIEW JERSEY FARM, INC.

